

# Discussion Dice - Geography

## Aim:

To introduce countries around the world and to make connections to cultural identity.

## Preparation:

- Constructed dice (see background sheet).
- Blank world map.
- Atlases.

## Instructions:

1. Allow students time to explore the world map and the atlas.
2. Roll the dice.
3. Students use the atlas to answers to the questions as they appear on the faces of the dice.
4. As a whole class discuss, the countries of origin of families and explain why people are grouped according to the continent of origin such as asians and europeans.

## Follow up ideas:

1. Use the dice as a literacy rotation activity.
2. Students write six geography questions to challenge their friends.
3. Students label a blank world map with the continents and significant countries in the class.



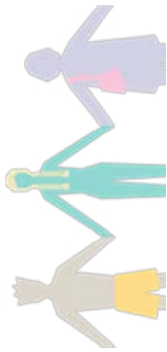
# Background sheet - Geography

Name the capital city of Australia.

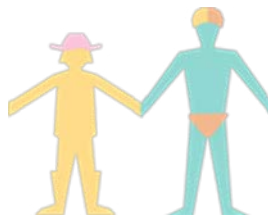


Name the continents.

Name six countries in Europe.



Name six countries in Asia.



Name the three closest countries to Australia



Name the countries represented by the students in your class.

